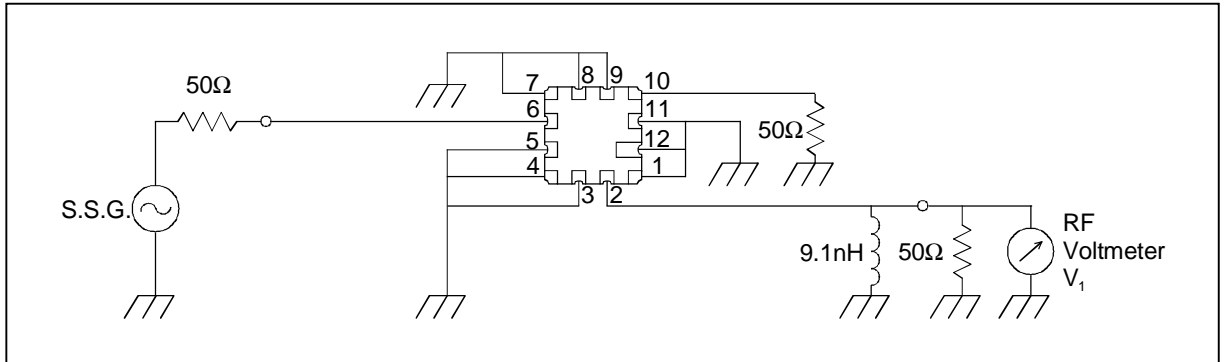


[ Tx → ANT ]

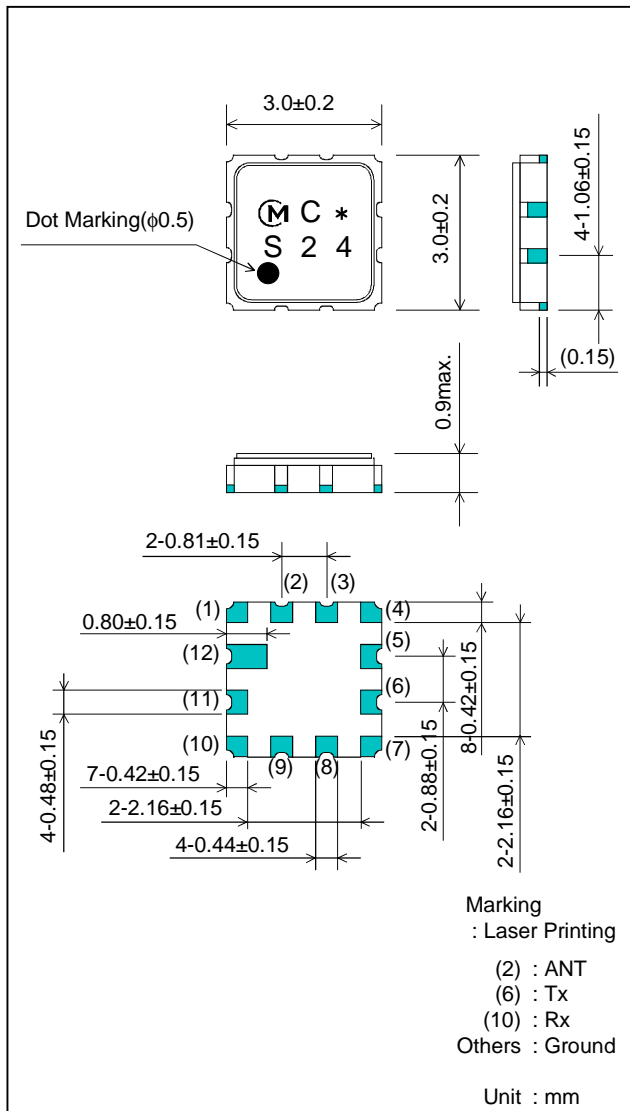
■ Feature

1. Low Insertion Loss (2.1 dB max.)
2. High Attenuation (at 843 to 846 MHz ; 38 dB min.)
3. Ultra Small SMD package (3.0x3.0mm package)

■ Test Circuit



■ Package Dimensions

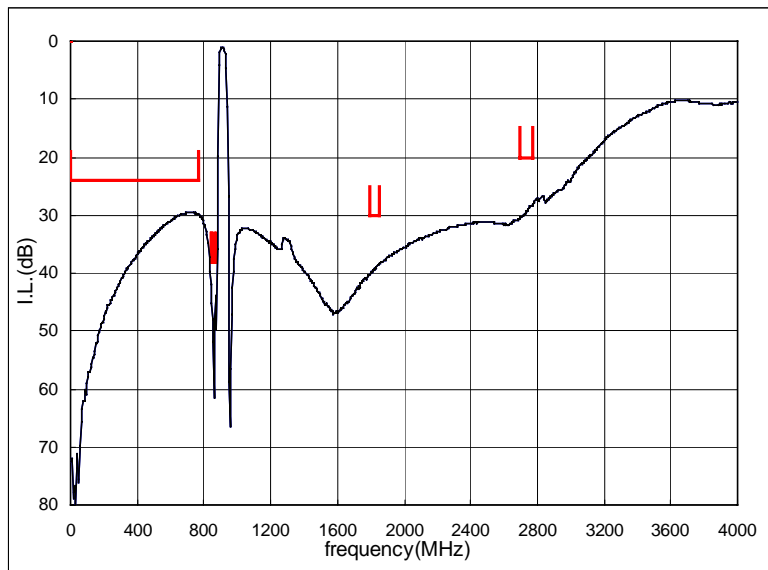
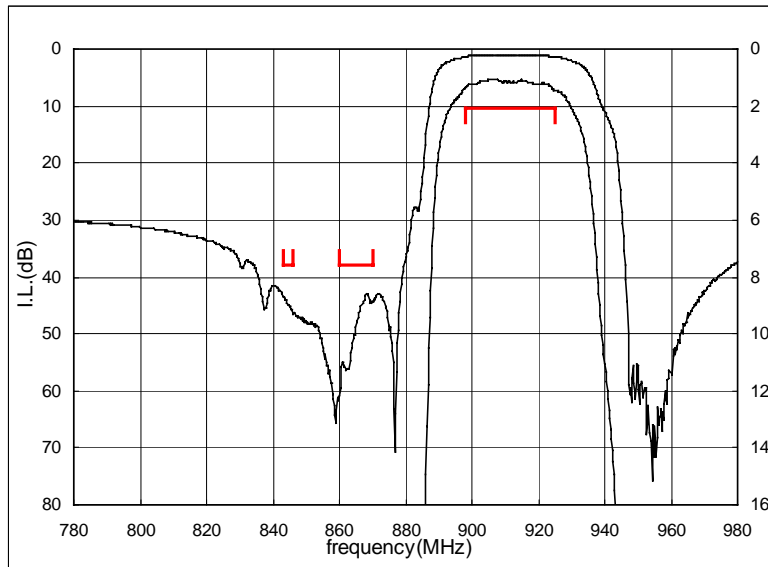


■ Specification

Item	Specification	
	-30 to +85°C	typ.
Nominal Center Frequency(fc)	911.5 MHz	
Insertion Loss (898 to 925 MHz)	2.1 dB max.	1.4 dB
Absolute Attenuation		
1) DC to 770 MHz	24 dB min.	29 dB
2) 843 to 846 MHz	38 dB min.	41 dB
3) 860 to 870 MHz	38 dB min.	44 dB
4) 1796 to 1850 MHz	30 dB min.	38 dB
5) 2694 to 2775 MHz	20 dB min.	24 dB
Ripple Deviation (898 to 925 MHz)	1.5 dB max.	0.4 dB
Return Loss (898 to 925 MHz)	2.0 max.	1.6
Input/Output Impedance (nominal)	50Ω	

[ Tx → ANT ]

■ Frequency Performance

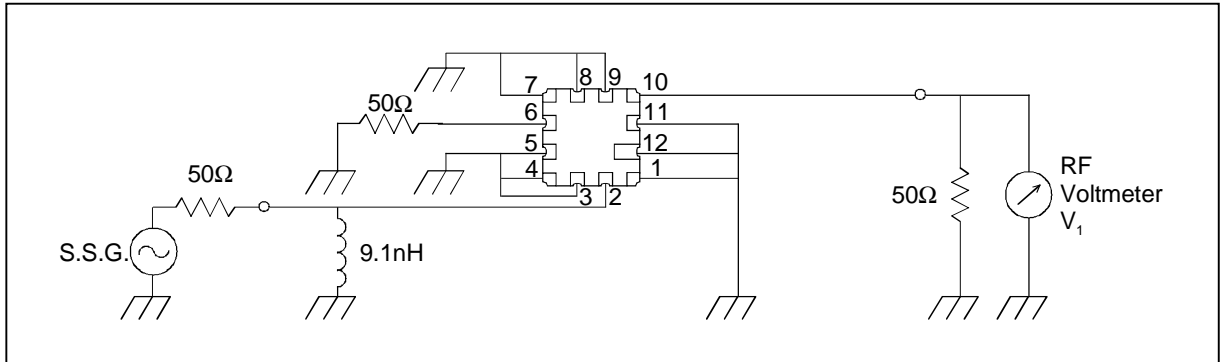


[ ANT → Rx ]

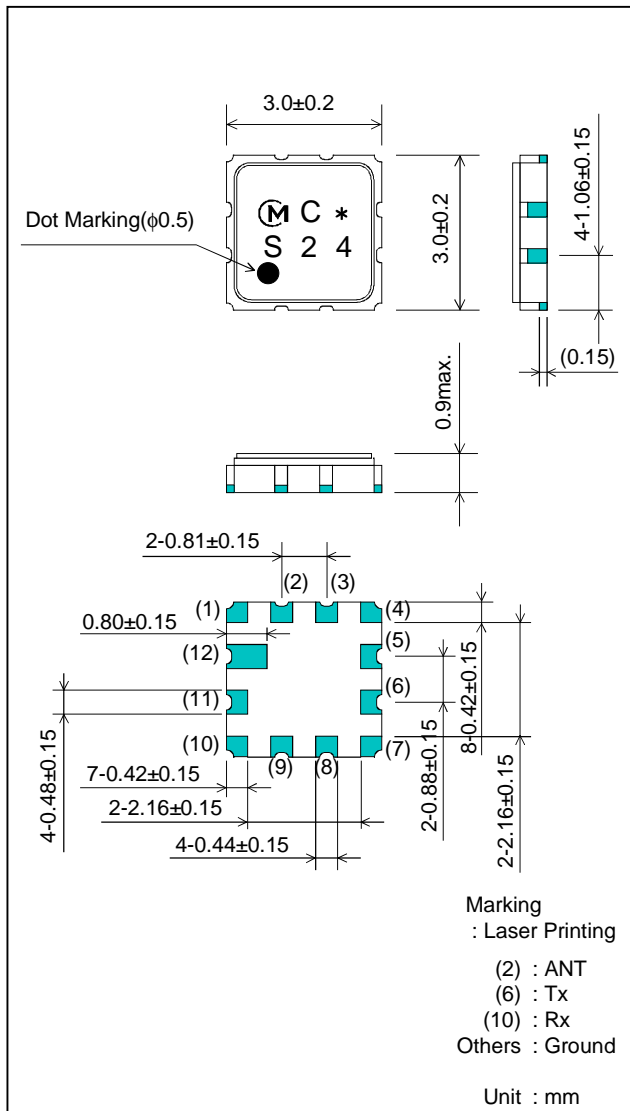
■ Feature

1. Low Insertion Loss (2.8 dB max.)
2. High Attenuation (at 915 to 925 MHz ; 44 dB min.)
3. Ultra Small SMD package (3.0x3.0mm package)

■ Test Circuit



■ Package Dimensions

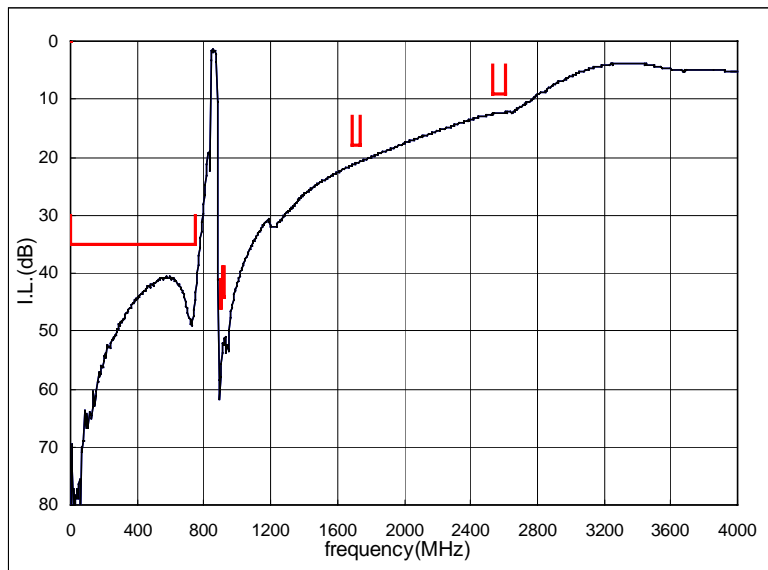
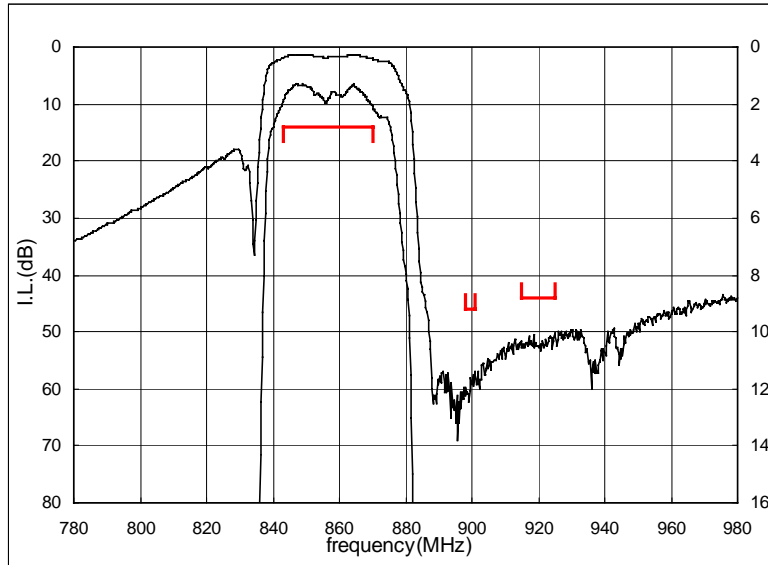


■ Specification

Item	Specification	
	-30 to +85°C	typ.
Nominal Center Frequency(fc)	856.5 MHz	
Insertion Loss (843 to 870 MHz)	2.8 dB max.	2.0 dB
Absolute Attenuation		
1) DC to 750 MHz	35 dB min.	40 dB
2) 898 to 901 MHz	46 dB min.	57 dB
3) 915 to 925 MHz	44 dB min.	50 dB
4) 1686 to 1740 MHz	18 dB min.	21 dB
5) 2529 to 2610 MHz	9 dB min.	12 dB
Ripple Deviation (843 to 870 MHz)	2.2 dB max.	0.8 dB
Return Loss (843 to 870 MHz)	2.4 max.	2.0
Input/Output Impedance (nominal)	50Ω	

[ ANT → Rx ]

■ Frequency Performance

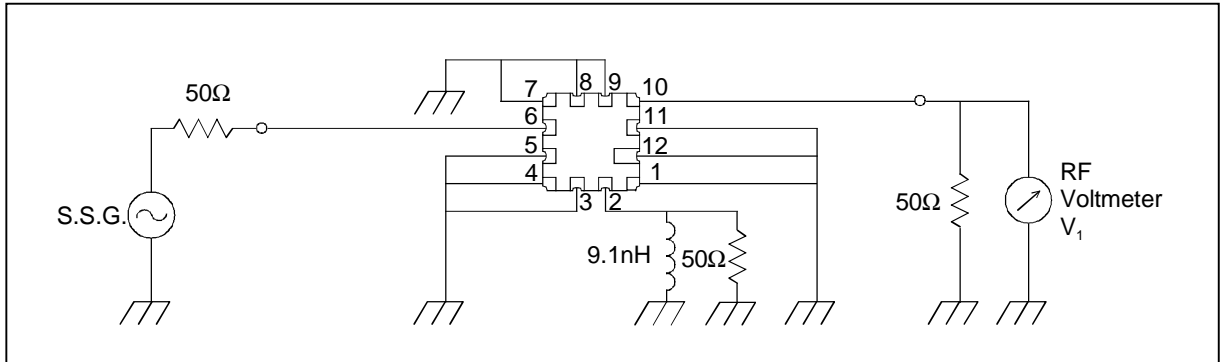


[ Tx → Rx ]

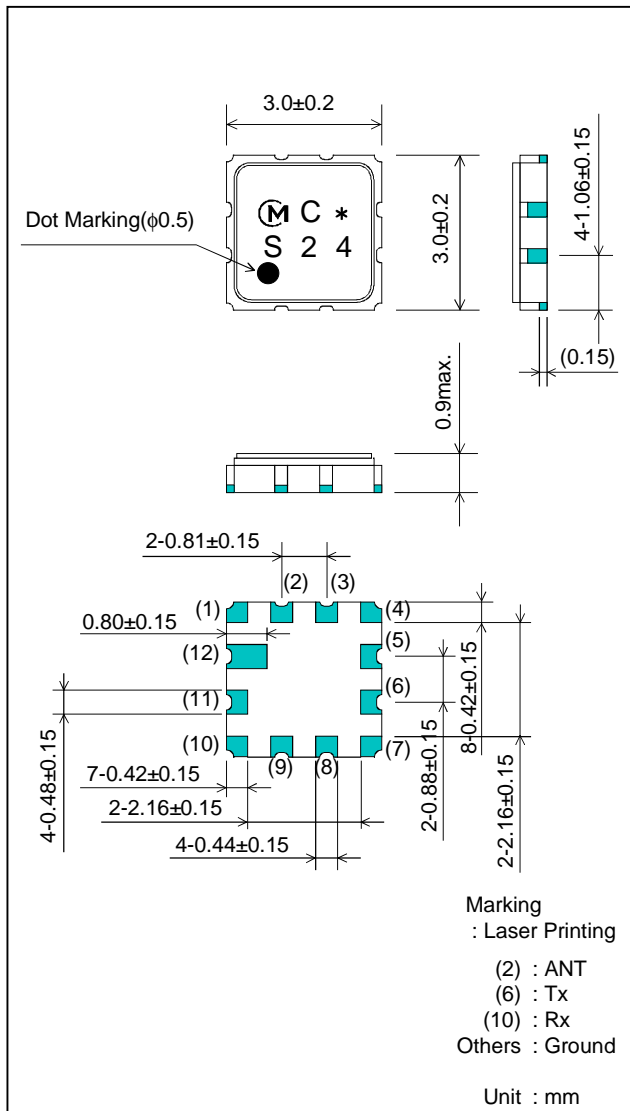
■ Feature

1. High Isolation (at 843 to 870 MHz ; 40 dB min.)
2. High Isolation (at 898 to 925 MHz ; 53 dB min.)

■ Test Circuit



■ Package Dimensions



■ Specification

Item	Specification	
	-30 to +85°C	typ.
Isolation		
1) 843 to 870 MHz	40 dB min.	43 dB
2) 898 to 925 MHz	53 dB min.	58 dB

[ Tx → Rx ]

■ Frequency Performance

