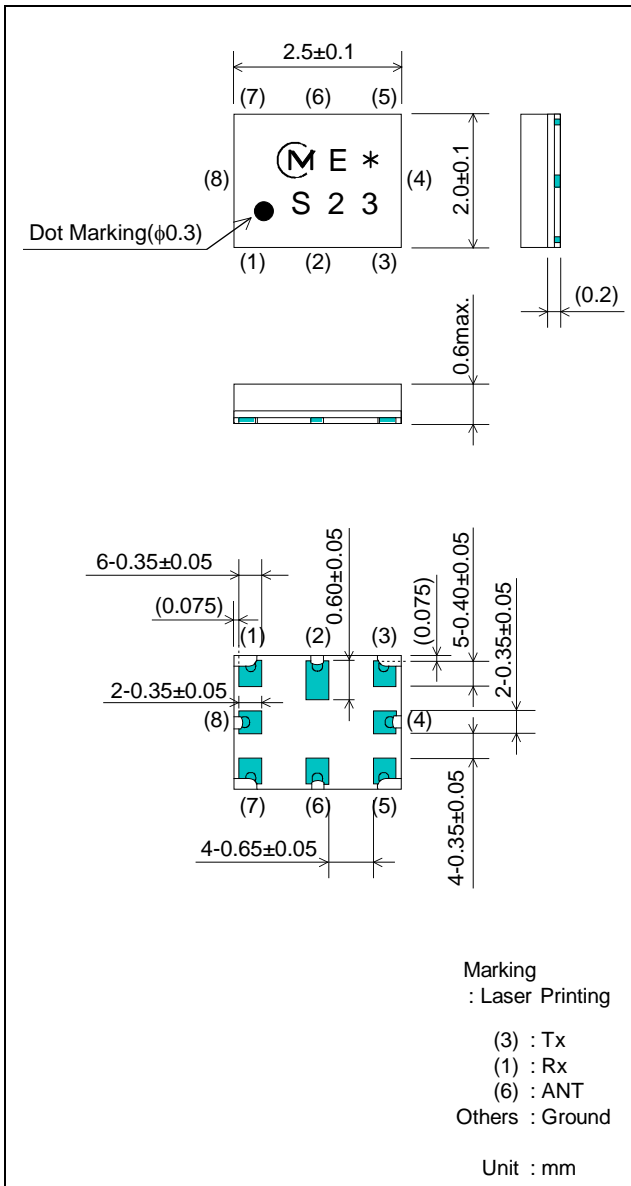


SAW DPX FOR UMTS BC9/IMT1.7G LR type

Murata part number :SAYEV1G76AC0F00 [Tx→ANT]

Package Dimensions



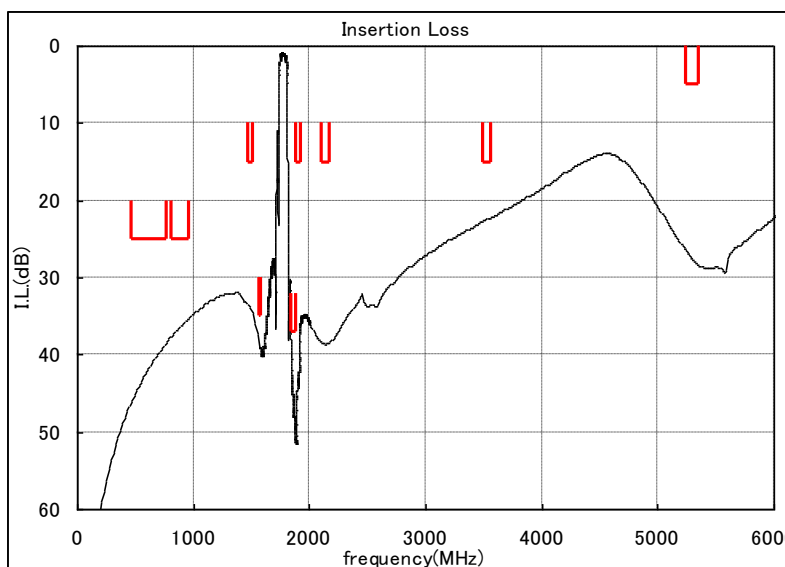
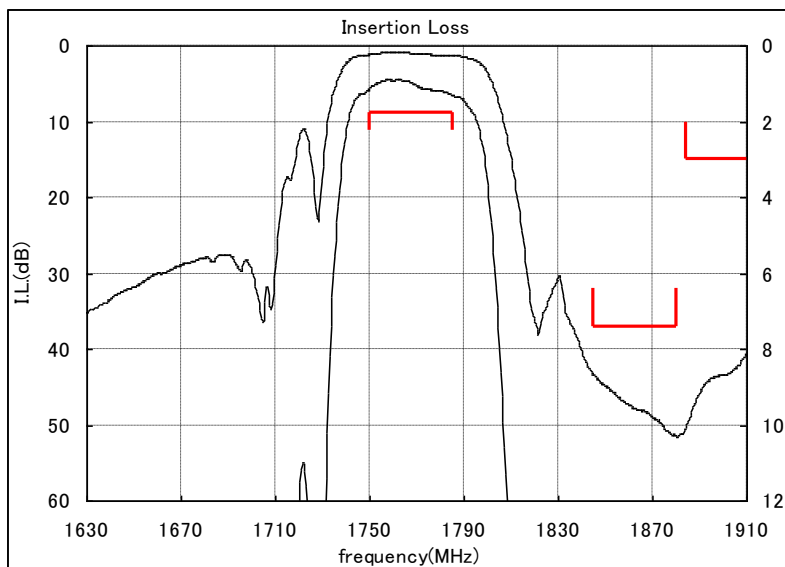
Specification

Item	Specification		
	-30 to 85°C	25±2°C	typ.
Nominal Center Frequency(fc)	1767.45MHz		
Insertion Loss (1749.9 to 1785MHz)	1.75 dB max.	1.65 dB max.	1.3 dB
Absolute Attenuation			
1) 470 to 770 MHz	25 dB min.	25 dB min.	37 dB
2) 810 to 960 MHz	25 dB min.	25 dB min.	36 dB
3) 1477 to 1516 MHz	15 dB min.	15 dB min.	32 dB
4) 1573 to 1577 MHz	35 dB min.	35 dB min.	39 dB
5) 1844.9 to 1880 MHz	37 dB min.	37 dB min.	43 dB
6) 1884 to 1920 MHz	15 dB min.	15 dB min.	35 dB
7) 2110 to 2170 MHz	15 dB min.	15 dB min.	38 dB
8) 3499 to 3570 MHz	15 dB min.	15 dB min.	22 dB
9) 5249 to 5355 MHz	5 dB min.	5 dB min.	26 dB
Ripple Deviation (1749.9 to 1785MHz)	0.8dB max.	0.8dB max.	0.4 dB
VSWR (1749.9 to 1785MHz)	1.8 max.	1.8 max.	1.4
Input/Output Impedance (nominal)	50Ω (ANT: with Parallel Coil:3.3nH)		
Input Signal Level	1.0W, 50000 hours(50°C)		

SAW DPX FOR UMTS BC9/IMT1.7G LR type

Murata part number :SAYEV1G76AC0F00 [Tx→ANT]

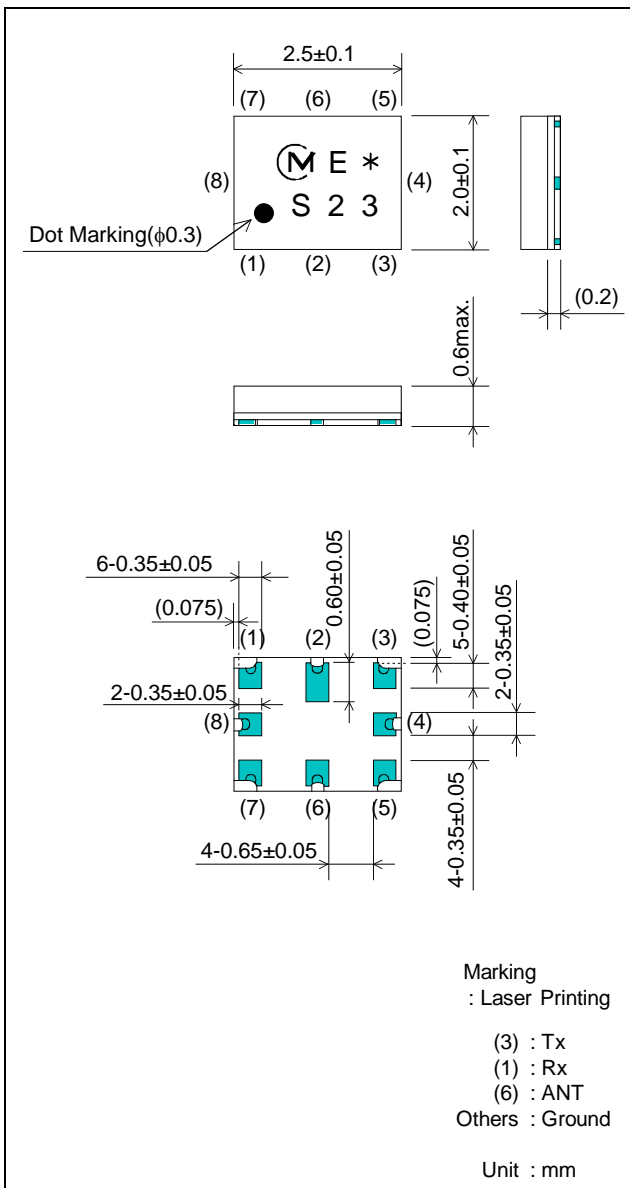
Frequency Performance



SAW DPX FOR UMTS BC9/IMT1.7G LR type

Murata part number :SAYEV1G76AC0F00 [ANT → Rx]

Package Dimensions



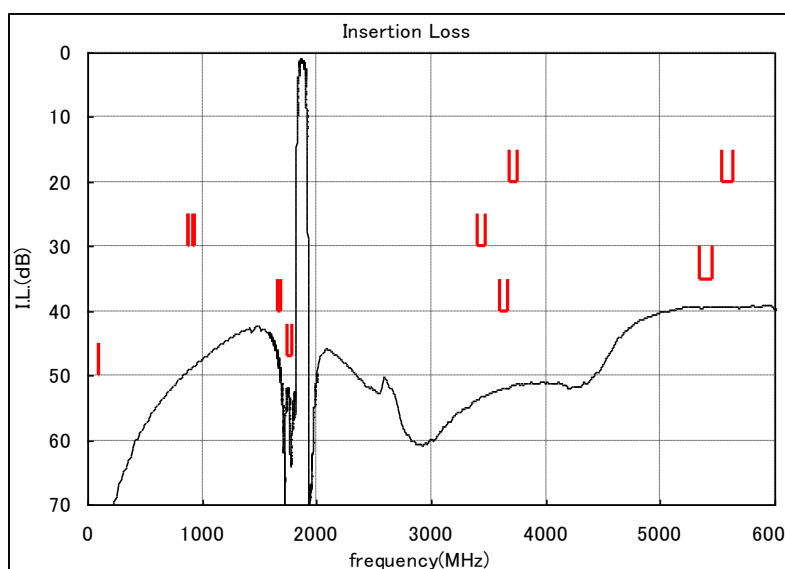
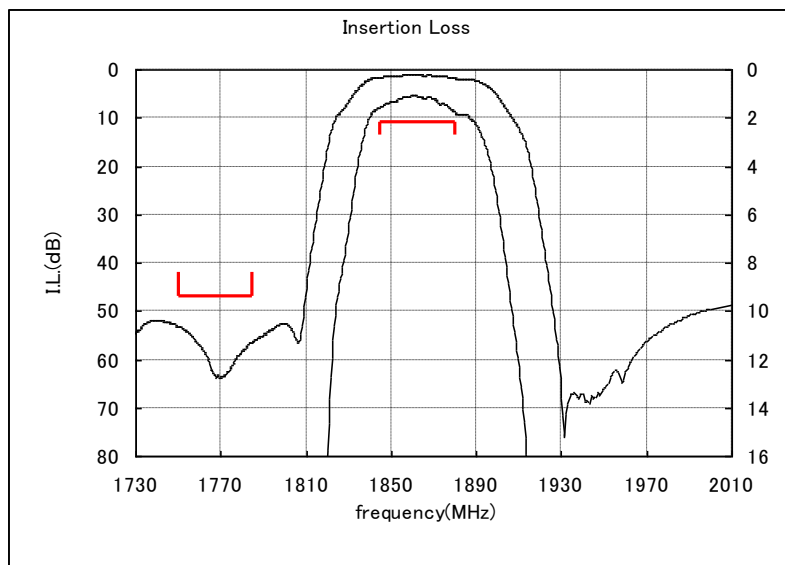
Specification

Item	Specification		
	-30 to 85°C	25±2°C	typ.
Nominal Center Frequency(fc)	1862.45MHz		
Insertion Loss (1844.9 to 1880MHz)	2.2 dB max.	2.1 dB max.	1.9 dB
Absolute Attenuation			
1) at 95MHz	50 dB min.	50 dB min.	81 dB
2) 875 to 885 MHz	30 dB min.	30 dB min.	48 dB
3) 922.5 to 940 MHz	30 dB min.	30 dB min.	46 dB
4) 1654 to 1690 MHz	40 dB min.	40 dB min.	48 dB
5) 1749.9 to 1785 MHz	47 dB min.	47 dB min.	53 dB
6) 3404 to 3475 MHz	30 dB min.	30 dB min.	47 dB
7) 3594 to 3665 MHz	40 dB min.	40 dB min.	50 dB
8) 3689 to 3760 MHz	20 dB min.	20 dB min.	50 dB
9) 5344 to 5450 MHz	35 dB min.	35 dB min.	38 dB
10) 5534 to 5640 MHz	20 dB min.	20 dB min.	38 dB
11) 7379 to 7520 MHz	10 dB min.	10 dB min.	44 dB
Ripple Deviation (1844.9 to 1880MHz)	1.1dB max.	1.1dB max.	0.7 dB
VSWR (1844.9 to 1880MHz)	2.0 max.	2.0 max.	1.4
Input/Output Impedance (nominal)	50Ω(ANT: with Parallel Coil:3.3nH)		

SAW DPX FOR UMTS BC9/IMT1.7G LR type

Murata part number :SAYEV1G76AC0F00 [ANT→Rx]

Frequency Performance

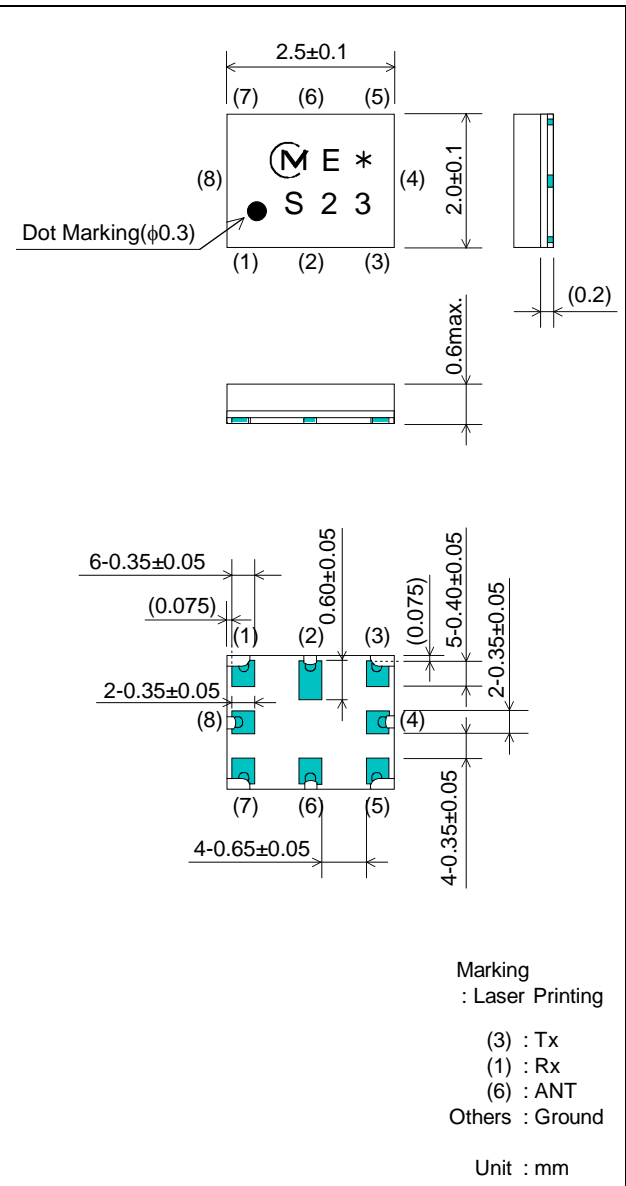


SAW DPX FOR UMTS BC9/IMT1.7G LR type

Murata part number : SAYEV1G76AC0F00 [Tx → Rx]

Package Dimensions

Specification

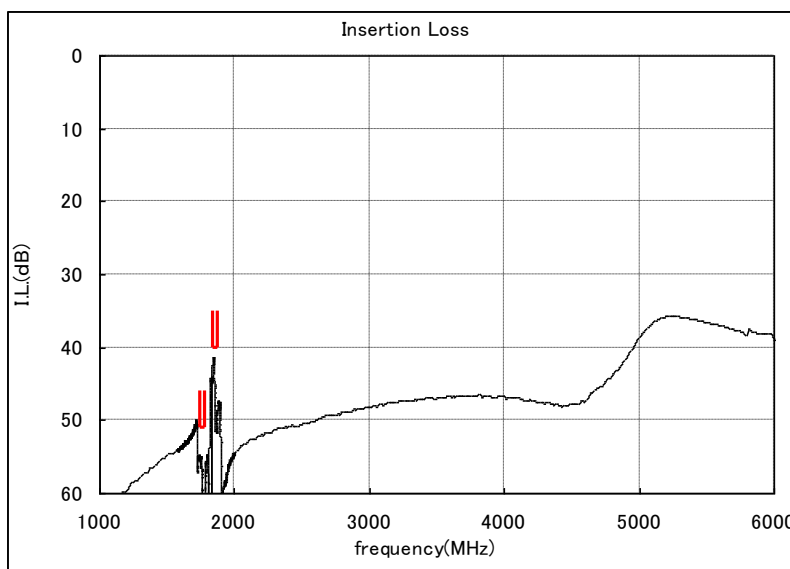
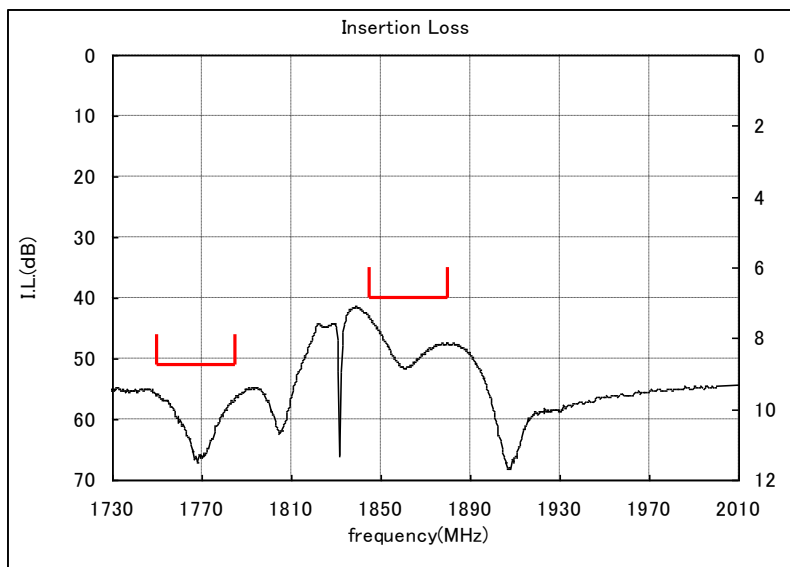


Item	Specification		
	-30 to 85°C	25±2°C	typ.
Isolation			
1) 1749.9 to 1785 MHz	51 dB min.	51 dB min.	55 dB
2) 1844.9 to 1880 MHz	40 dB min.	40 dB min.	43 dB

SAW DPX FOR UMTS BC9/IMT1.7G LR type

Murata part number :SAYEV1G76AC0F00 [Tx→Rx]

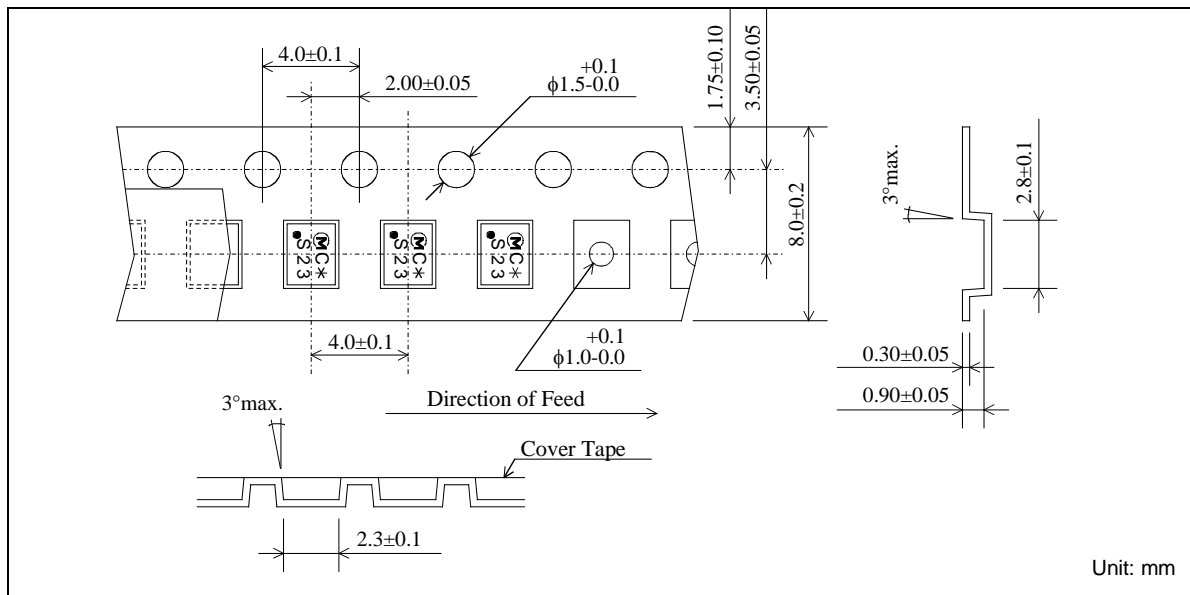
Frequency Performance



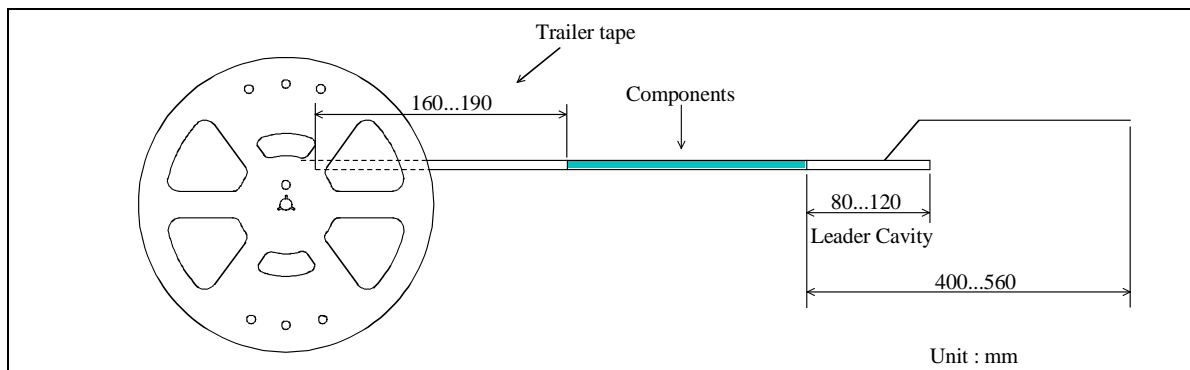
SAW DPX FOR UMTS BC9/IMT1.7G LR type

Murata part number :SAYEV1G76AC0F00

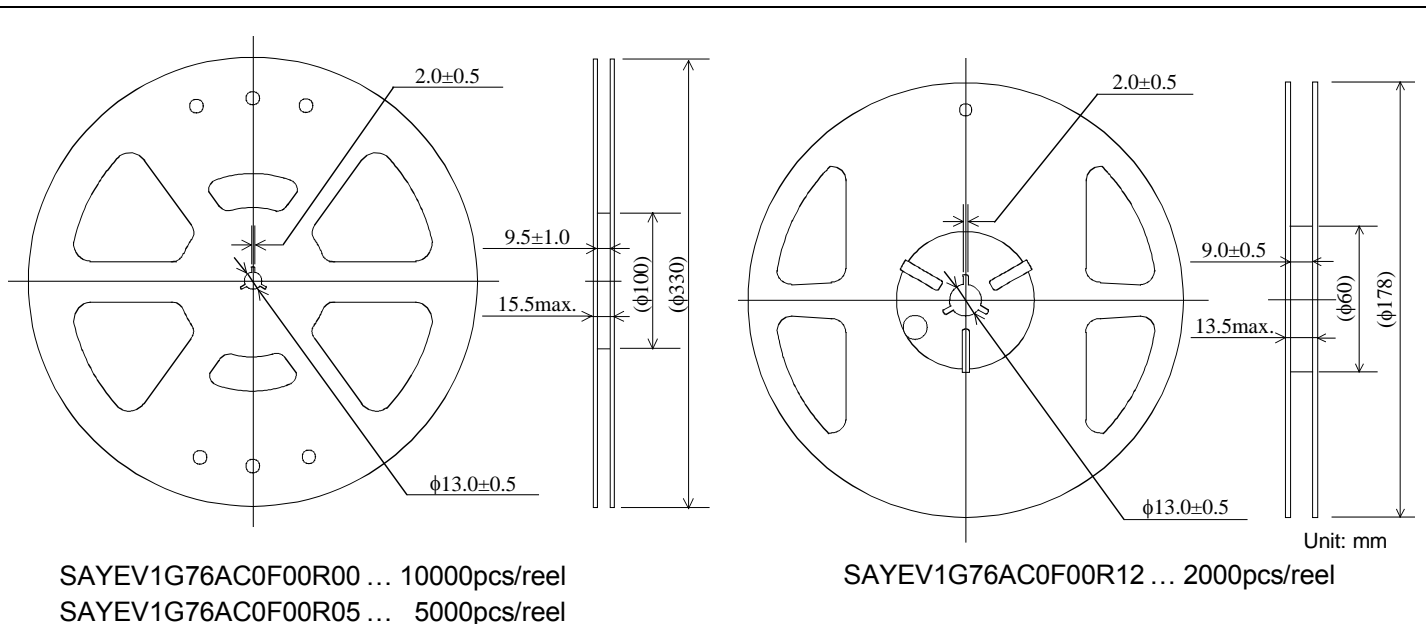
Dimensions of Carrier Tape



Dimensions of Tape



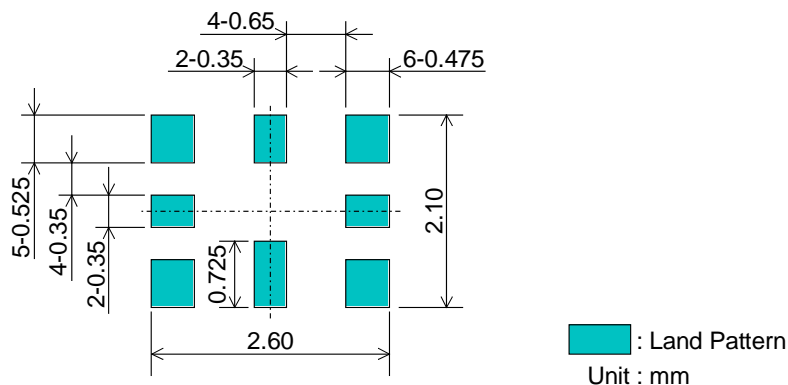
Dimensions of Reel



SAW DPX FOR UMTS BC9/IMT1.7G LR type

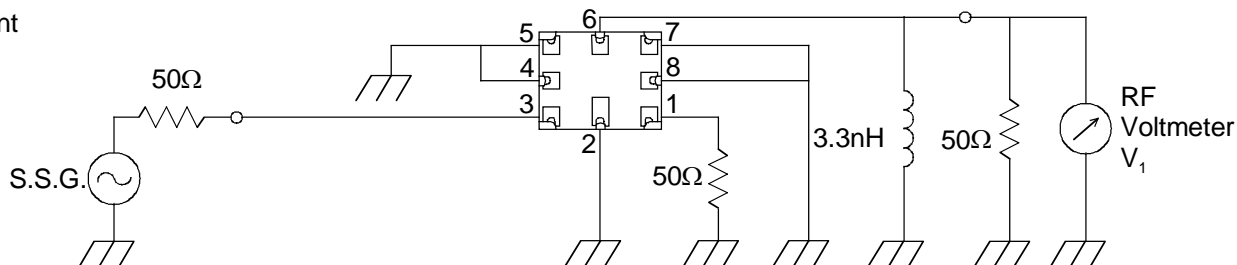
Murata part number :SAYEV1G76AC0F00

Recommended Land Pattern

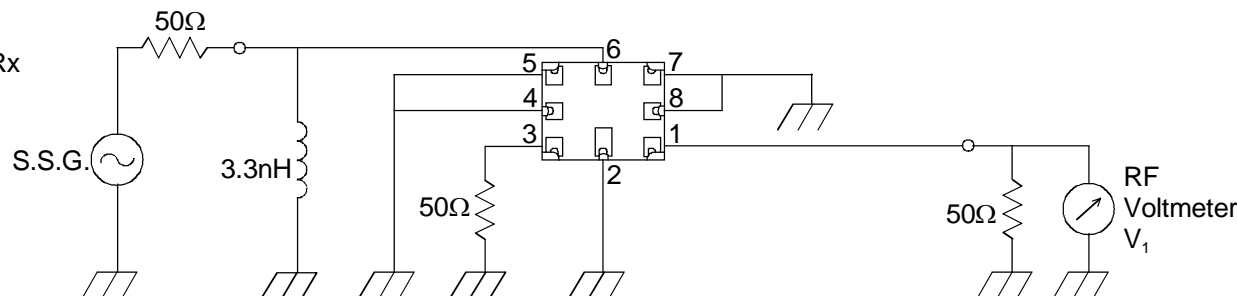


Test Circuit

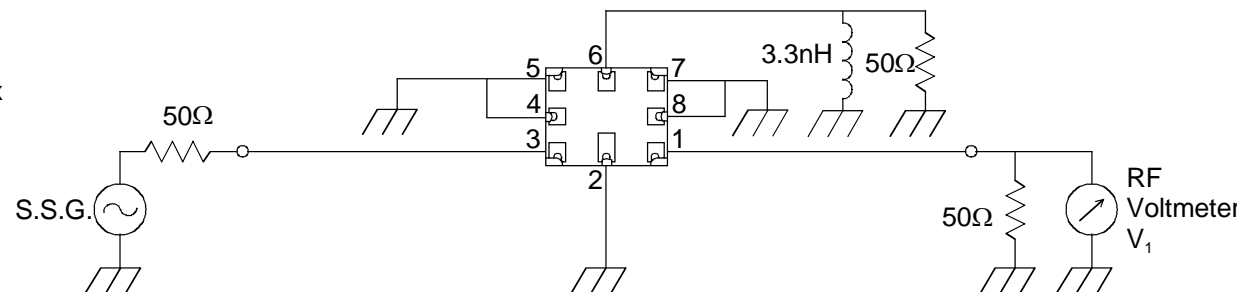
Tx → Ant



Ant → Rx



Tx → Rx



- This PDF Datasheet is downloaded from the website of Murata Manufacturing Co., Ltd. Therefore, it's specifications are subject to change or our products in it may be discontinued without advance notice. Please check with our sales representatives or product engineers before ordering.
- This PDF Datasheet has only typical specifications because there is no space for detailed specifications. Therefore, please approve our product specifications or transact the approval sheet for product specifications before ordering.