



Data Sheet of SAW Components



Note : Murata SAW Component is applicable for Cellular /Cordless phone (Terminal) relevant market only.

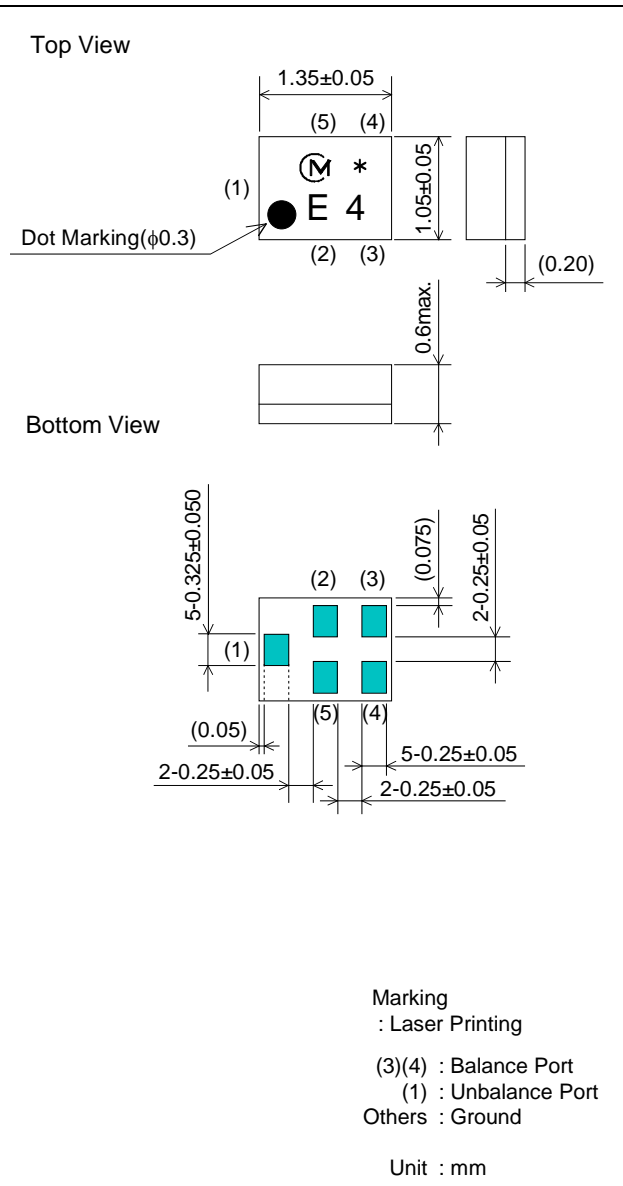
Please also read caution at the end of this document.

SAW FILTER FOR CDMA800/TDMA800/E-AMPS/GSM850/UMTS BC5 Tx

Murata part number : SAFEB836MFL0F00

■ Package Dimensions

■ Specification

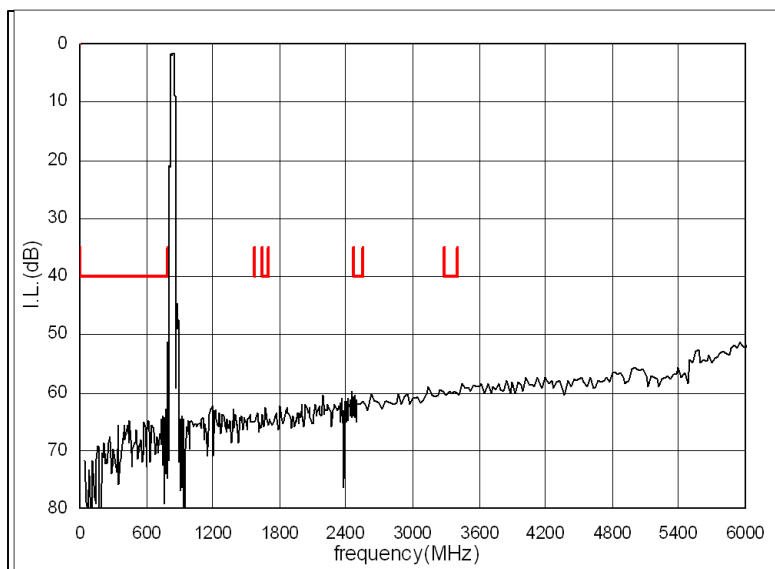
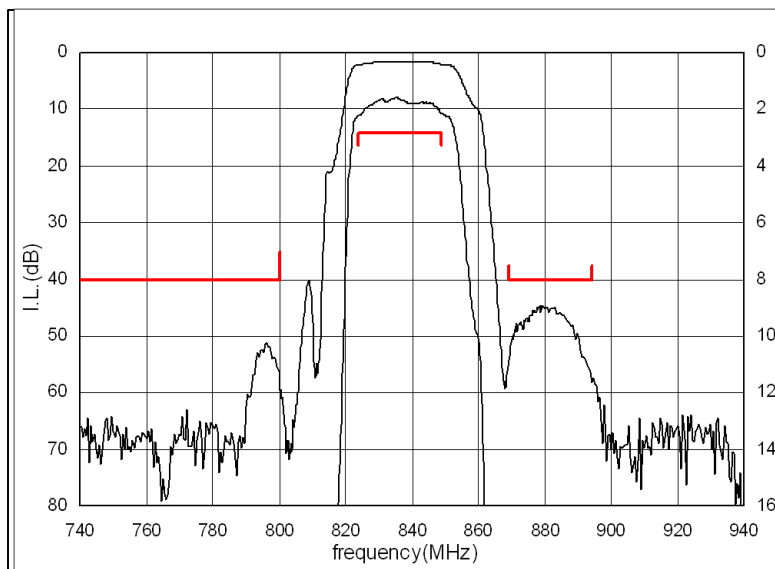


Item	Specification		
	-30 to 85°C	25±2°C	typ.
Nominal Center Frequency(f_c)	836.5MHz		
Insertion Loss (824 to 849MHz)	2.8 dB max.	2.5 dB max.	2.3 dB
Absolute Attenuation			
1) 0.1 to 800 MHz	40 dB min.	40 dB min.	51 dB
2) 869 to 894 MHz	40 dB min.	40 dB min.	43 dB
3) 1574.4 to 1576.4 MHz	40 dB min.	40 dB min.	63 dB
4) 1638 to 1708 MHz	40 dB min.	40 dB min.	61 dB
5) 2462 to 2557 MHz	40 dB min.	40 dB min.	59 dB
6) 3286 to 3406 MHz	40 dB min.	40 dB min.	57 dB
Ripple Deviation (824 to 849MHz)	1.5dB max.	1.5dB max.	0.8 dB
VSWR (824 to 849MHz)	2.0 max.	2.0 max.	1.8
Amplitude Balance (824 to 849MHz)	±1.0dB max.	±0.8dB max.	+0.2dB
Phase Balance (824 to 849MHz)	180±10deg. max.	180±8deg. max.	180+1.4deg.
Balance Port Matching Impedance (nominal)	200Ω		
Unbalance Port Matching Impedance (nominal)	50Ω		
Input Signal Level	31.6mW (+15dBm), 2000 hours		

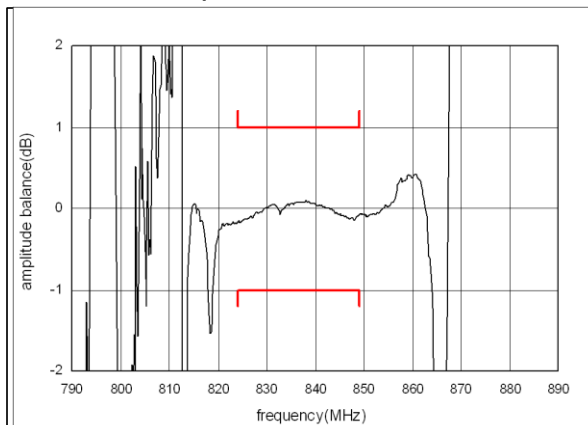
SAW FILTER FOR CDMA800/TDMA800/E-AMPS/GSM850/UMTS BC5 Tx

Murata part number : SAFEB836MFL0F00

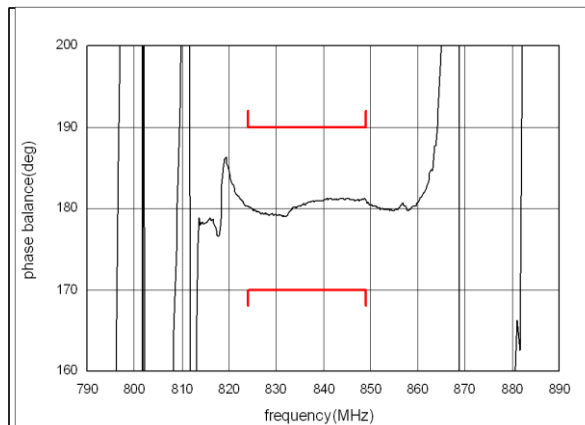
Frequency Performance



Amplitude balance



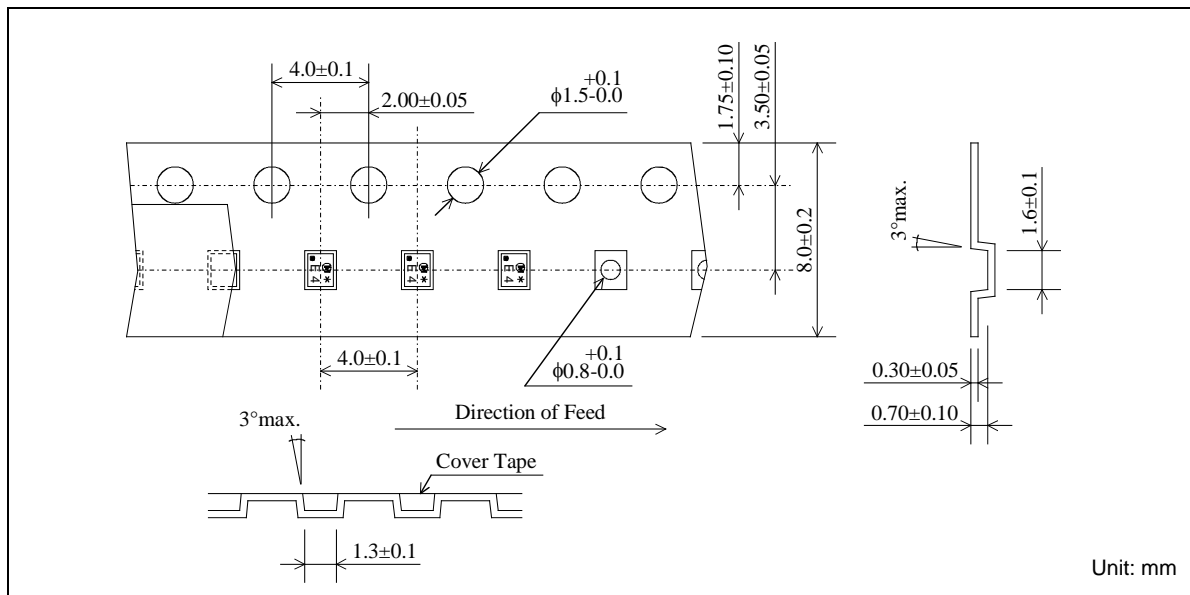
Phase balance



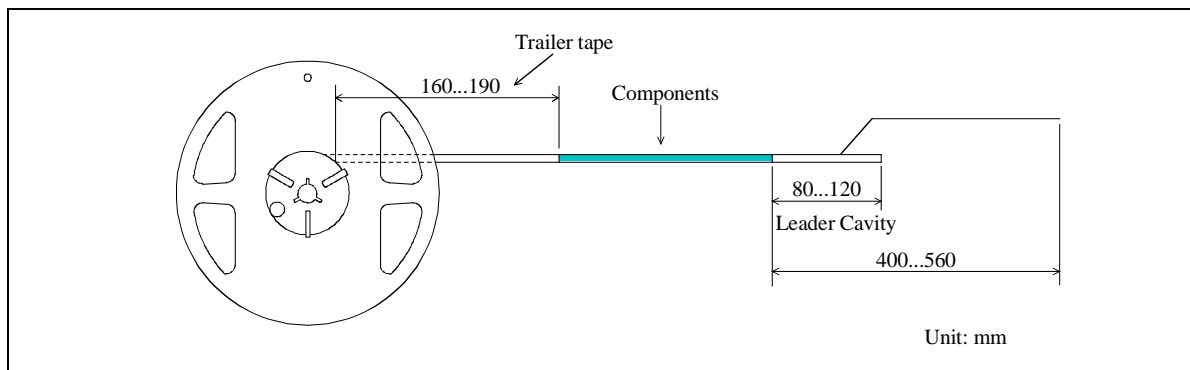
SAW FILTER FOR CDMA800/TDMA800/E-AMPS/GSM850/UMTS BC5 Tx

Murata part number : SAFEB836MFL0F00

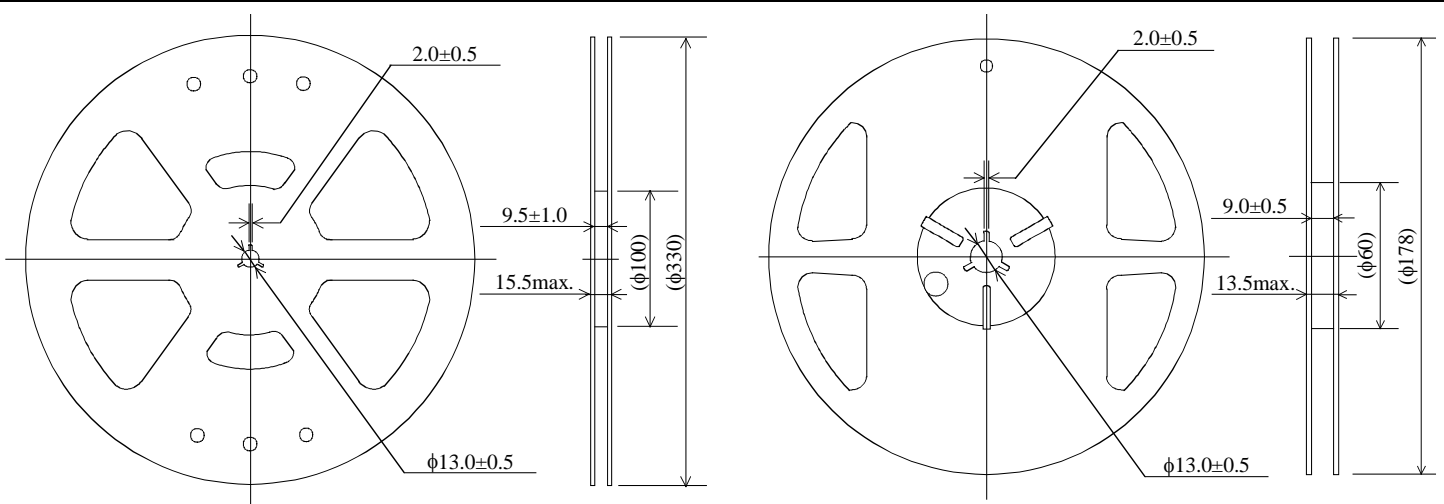
Dimensions of Carrier Tape



Dimensions of Tape



Dimensions of Reel



SAFEB836MFL0F00R00 ... 10000pcs/reel

SAFEB836MFL0F00R15 ... 5000pcs/reel

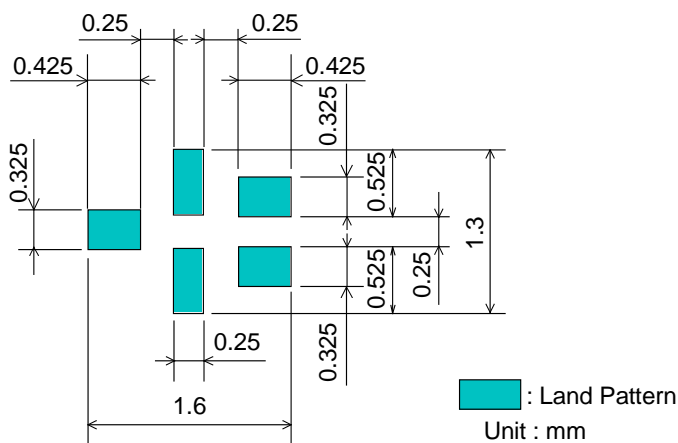
Unit: mm

SAW FILTER FOR CDMA800/TDMA800/E-AMPS/GSM850/UMTS BC5 Tx

Murata part number : SAFEB836MFL0F00

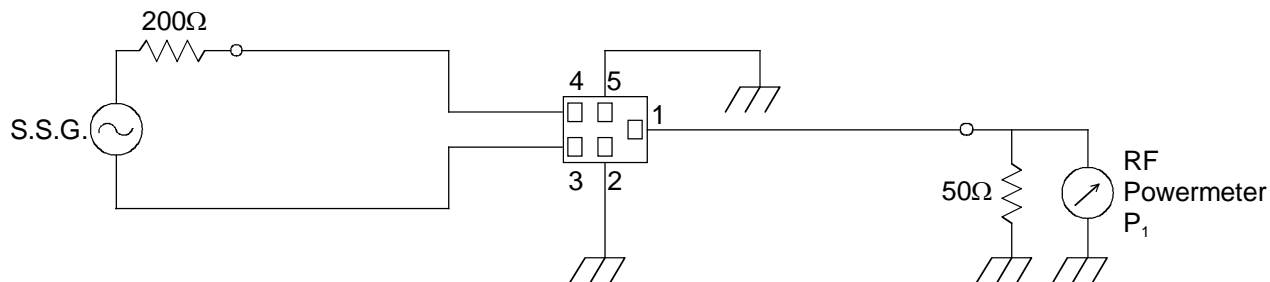
Recommended Land Pattern

Top View



Test Circuit

Bottom View



SAW FILTER FOR CDMA800/TDMA800/E-AMPS/GSM850/UMTS BC5 Tx

■ RoHS Compliance Murata part number : SAFEB836MFL0F00

This component is compliant with RoHS directive.

This component was always RoHS compliant from the first date of manufacture.

• Caution - Limitation of Applications

This product is intended for the following applications only; however, please do not use this product in these applications where defects might directly cause damage to a third party's life, body or property.

- a. Mobile Telephone
- b. Cordless phone (except for Automotive use)
- c. PC (Including Notebook PC, Netbook PC, Tablet)
- d. Game
- e. Camera (except for Business/security use)
- f. Set Top Box
- g. Electronic dictionary
- h. Digital audio equipment

• This catalog is for reference only and not an official product specification document, therefore, please review and approve our official product specification before ordering this product.