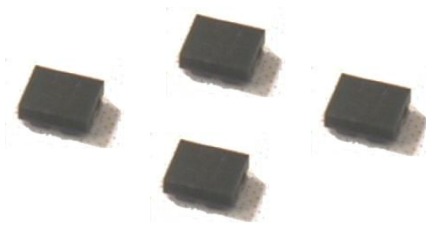




Data Sheet of SAW Components



Note : Murata SAW Component is applicable for Cellular /Cordless phone (Terminal) relevant market only.

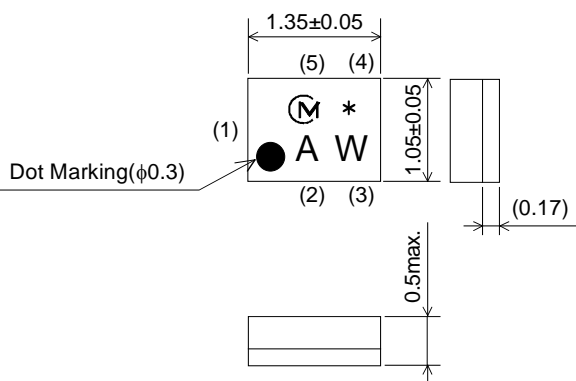
Please also read caution at the end of this document.

SAW FILTER FOR GSM850 (Rx)

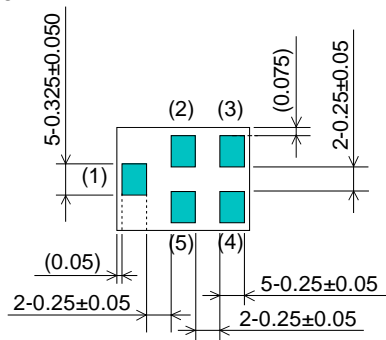
Murata part number : SAFEA881MFL0F00

Package Dimensions

Top View



Bottom View



Marking
: Laser Printing

(1) : Unbalance Port
(3)(4) : Balance Port
Others : Ground

Unit : mm

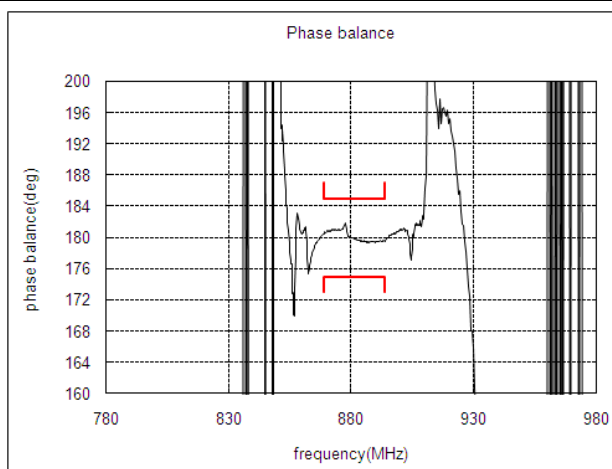
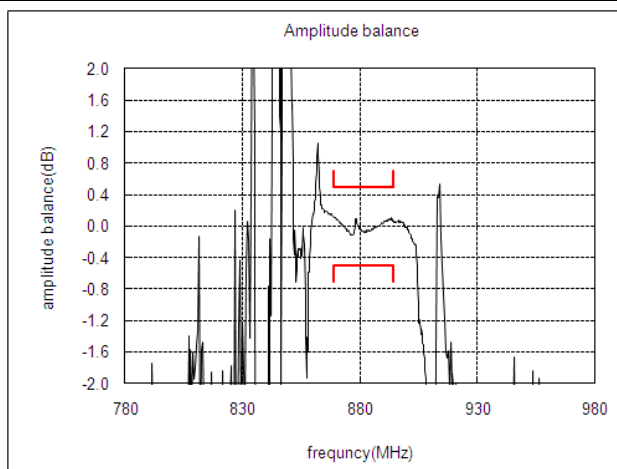
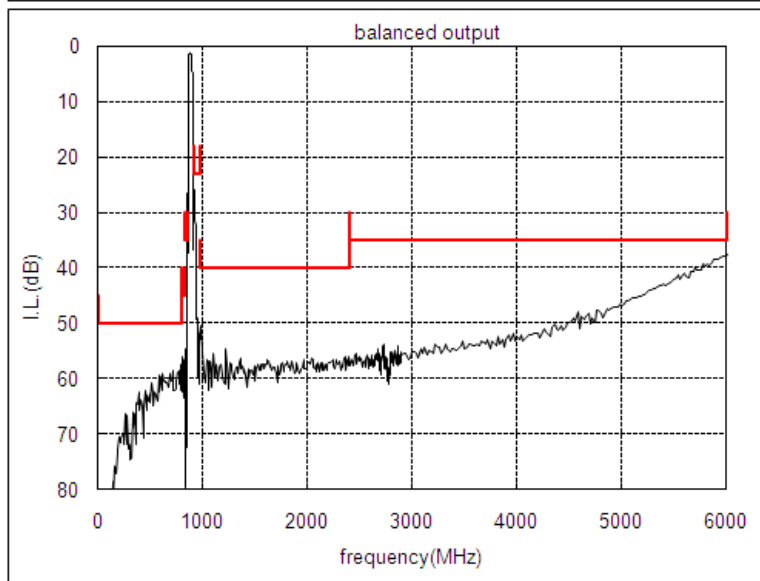
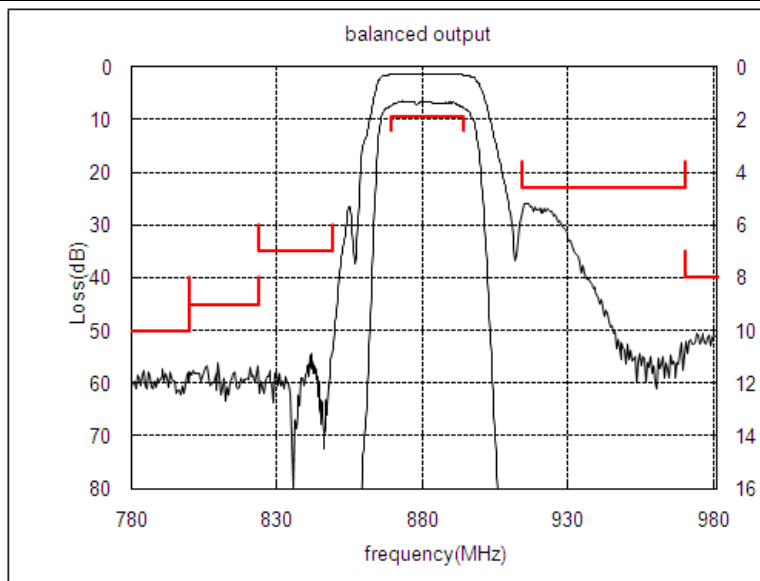
Specification

Item	Specification		
	-30 to 85°C	25±2°C	typ.
Nominal Center Frequency(f_c)	881.5MHz		
Insertion Loss (869 to 894MHz)	1.9dB max.	1.7dB max.	1.5 dB
Absolute Attenuation			
1) 0.1 to 800 MHz	50 dB min.	50 dB min.	56 dB
2) 800 to 824 MHz	45 dB min.	45 dB min.	55 dB
3) 824 to 849 MHz	35 dB min.	38 dB min.	55 dB
4) 914 to 970 MHz	23 dB min.	24 dB min.	27 dB
5) 970 to 2400 MHz	40 dB min.	40 dB min.	52 dB
6) 2400 to 6000 MHz	35 dB min.	35 dB min.	42 dB
Ripple Deviation (869 to 894MHz)	1.0dB max.	0.6dB max.	0.3 dB
VSWR (869 to 894MHz)	1.7 max.	1.6 max.	1.4
Amplitude Balance (869 to 894MHz)	±0.5dB max.	±0.5dB max.	±0.2dB
Phase Balance (869 to 894MHz)	180±5deg. max.	180±5deg. max.	180+0.8deg.
Unbalance Port Matching Impedance (nominal)	50Ω		
Balance Port Matching Impedance (nominal)	150Ω//82nH		

SAW FILTER FOR GSM850 (Rx)

Murata part number : SAFEA881MFL0F00

Frequency Performance

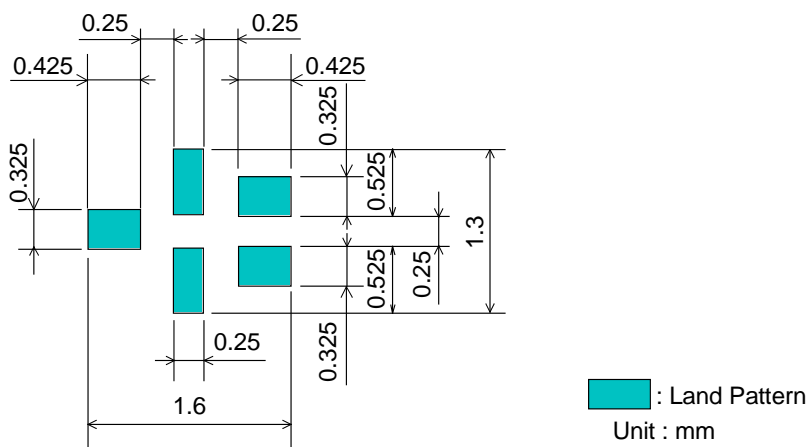


SAW FILTER FOR GSM850 (Rx)

Murata part number : SAFEA881MFL0F00

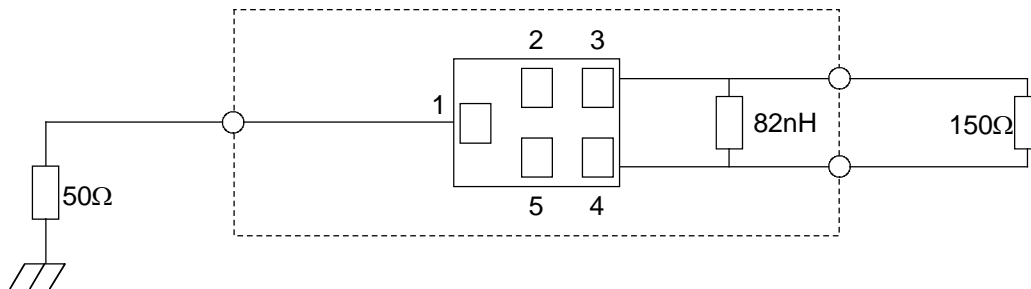
Recommended Land Pattern

Top View



Test Circuit

Bottom View



SAW FILTER FOR GSM850 (Rx)

Murata part number : SAFEA881MFL0F00

■ RoHS Compliance

This component is compliant with RoHS directive.

This component was always RoHS compliant from the first date of manufacture.

• Caution - Limitation of Applications

This product is intended for the following applications only; however, please do not use this product in these applications where defects might directly cause damage to a third party's life, body or property.

- a. Mobile Telephone
- b. Cordless phone (except for Automotive use)
- c. PC (Including Notebook PC, Netbook PC, Tablet)
- d. Game
- e. Camera (except for Business/security use)
- f. Set Top Box
- g. Electronic dictionary
- h. Digital audio equipment

• This catalog is for reference only and not an official product specification document, therefore, please review and approve our official product specification before ordering this product.