



Data Sheet of SAW Components



Note : Murata SAW Component is applicable for Cellular /Cordless phone (Terminal) relevant market only.

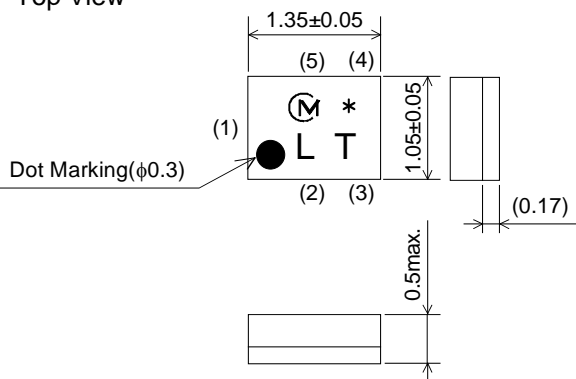
Please also read caution at the end of this document.

SAW FILTER FOR UMTS BC2 Tx

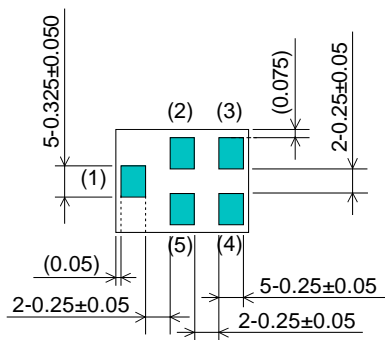
Murata part number : SAFEA1G88FL0F00

Package Dimensions

Top View



Bottom View



Marking
: Laser Printing

(1) : Unbalance Port
(3)(4) : Balance Port
Others : Ground

Unit : mm

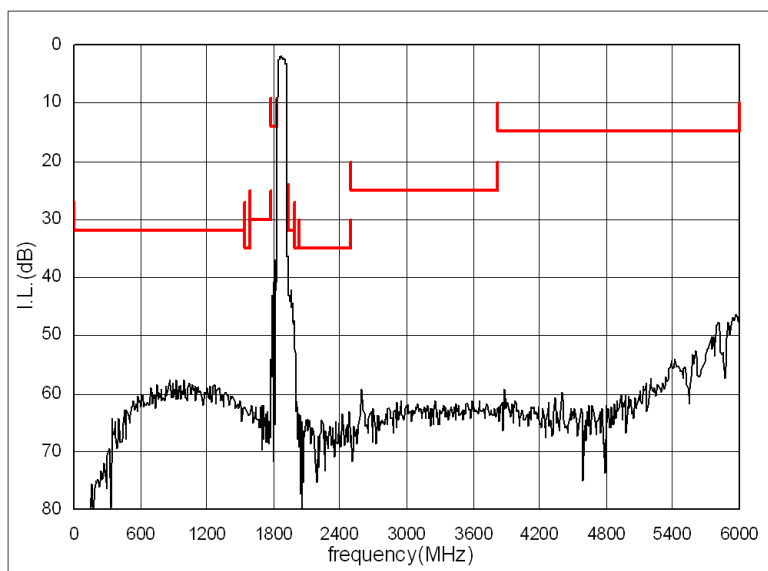
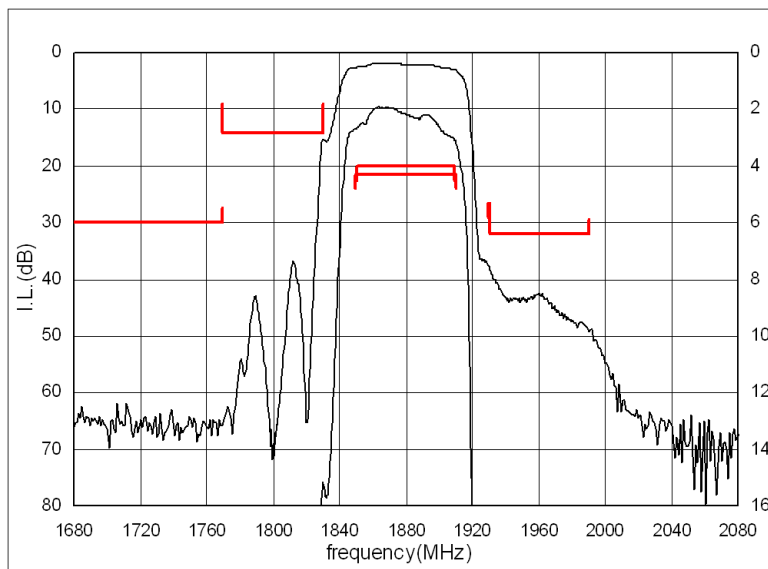
Specification

Item	Specification		
	-30 to 85°C	25±2°C	typ.
Nominal Center Frequency(fc)	1880MHz		
Insertion Loss (1850 to 1909.5MHz)	4.0 dB max.	3.5 dB max.	3.0 dB
(1850 to 1910MHz)	4.3 dB max.	3.5 dB max.	3.0 dB
Absolute Attenuation			
1) 0.1 to 1550 MHz	32 dB min.	32 dB min.	62 dB
2) 1550 to 1580 MHz	35 dB min.	35 dB min.	67 dB
3) 1580 to 1770 MHz	30 dB min.	30 dB min.	65 dB
4) 1770 to 1830 MHz	14 dB min.	14 dB min.	28 dB
5) 1930 to 1930.5 MHz	29 dB min.	35 dB min.	37 dB
6) 1930.5 to 1990 MHz	32 dB min.	35 dB min.	37 dB
7) 1990 to 2032 MHz	35 dB min.	35 dB min.	47 dB
8) 2032 to 2500 MHz	35 dB min.	35 dB min.	60 dB
9) 2500 to 3820 MHz	25 dB min.	25 dB min.	56 dB
10) 3820 to 6000 MHz	15 dB min.	15 dB min.	44 dB
Ripple Deviation (1850 to 1910MHz)	2.5dB max.	1.8dB max.	1.3 dB
VSWR (1850 to 1910MHz)	2.4 max.	2.2 max.	2.0
Amplitude Balance (1850 to 1910MHz)	±1.0dB max.	±1.0dB max.	+0.5dB
Phase Balance (1850 to 1910MHz)	180±10deg. max.	180±10deg. max.	180+5deg.
Unbalance Port Impedance (nominal)	50Ω		
Balance Port Impedance (nominal)	200Ω//82nH		
Input Signal Level	20mW (+13dBm), 2000 hours		

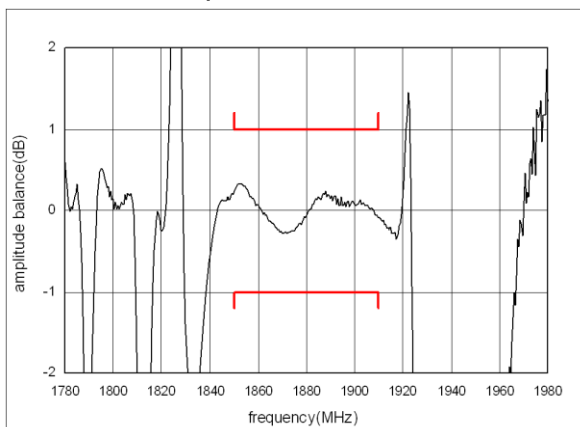
SAW FILTER FOR UMTS BC2 Tx

Murata part number : SAFEA1G88FL0F00

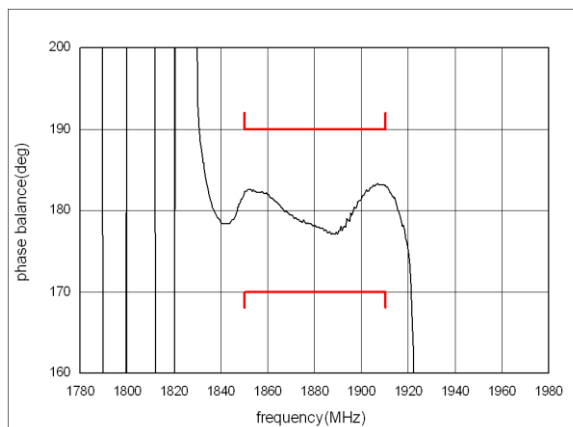
Frequency Performance



Amplitude balance



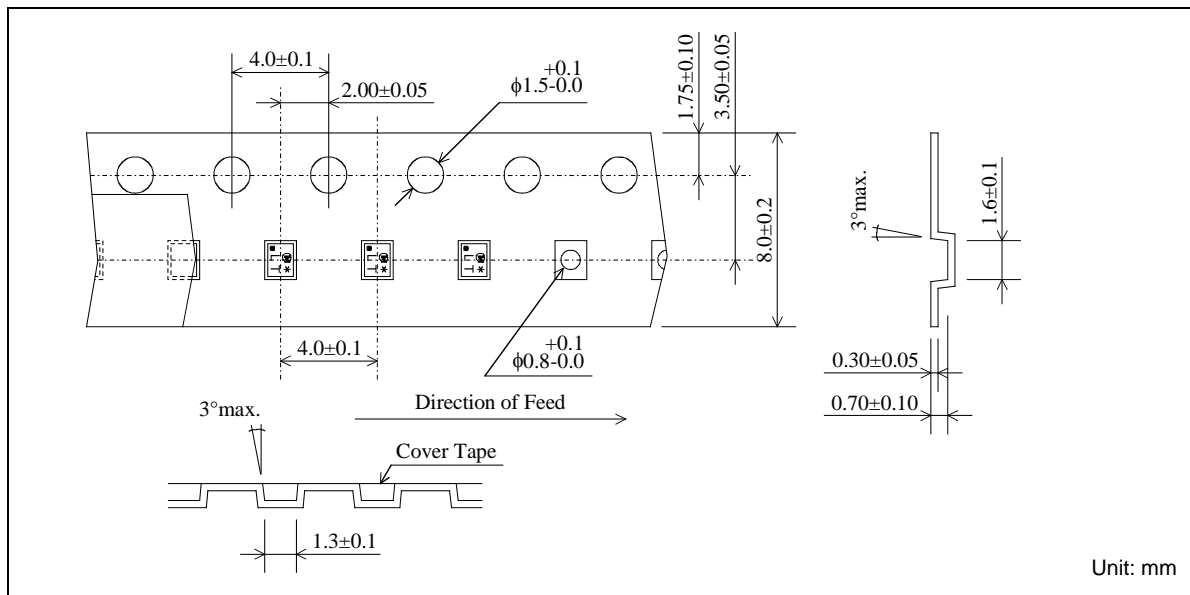
Phase balance



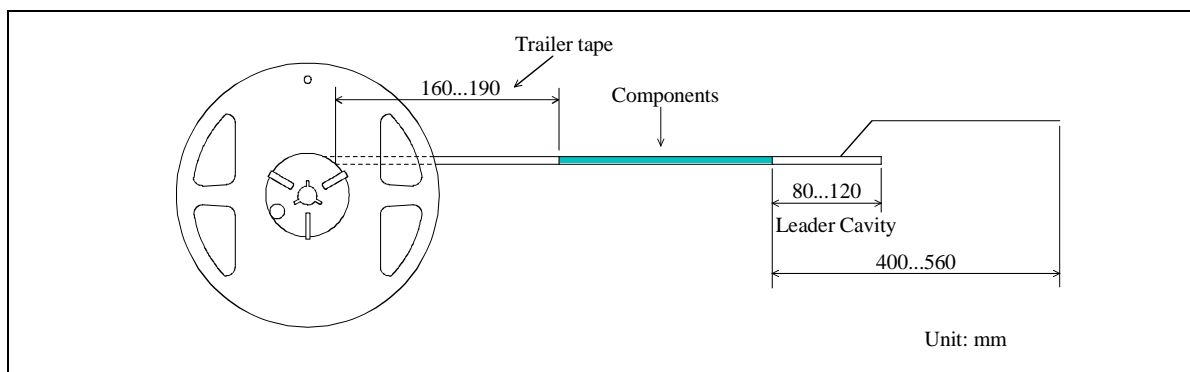
SAW FILTER FOR UMTS BC2 Tx

Murata part number : SAFEA1G88FL0F00

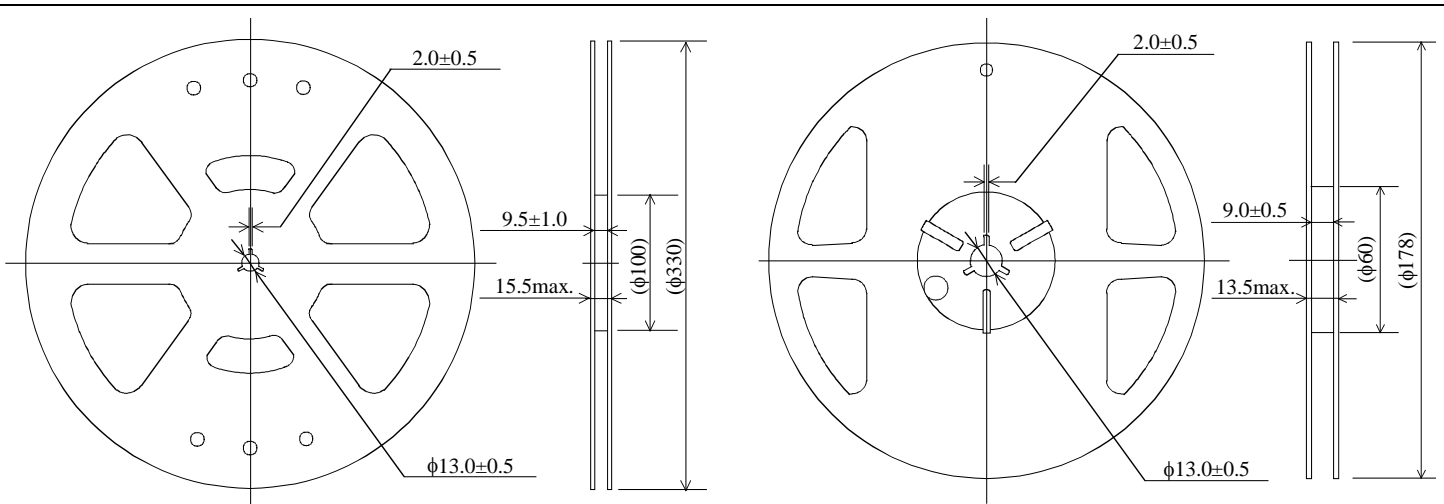
Dimensions of Carrier Tape



Dimensions of Tape



Dimensions of Reel



SAFEA1G88FL0F00R00 ... 10000pcs/reel

SAFEA1G88FL0F00R15 ... 5000pcs/reel

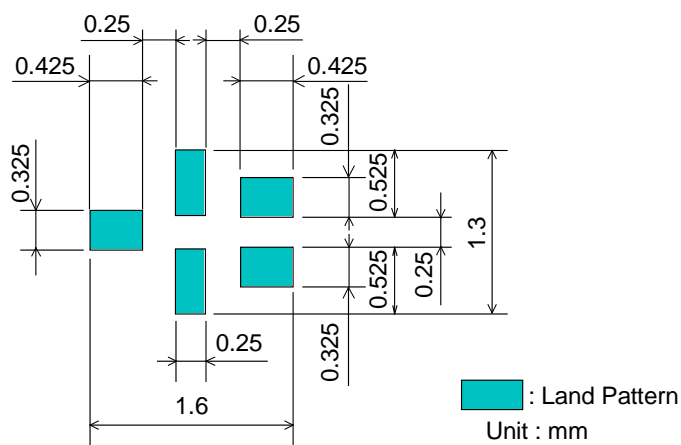
Unit: mm

SAW FILTER FOR UMTS BC2 Tx

Murata part number : SAFEA1G88FL0F00

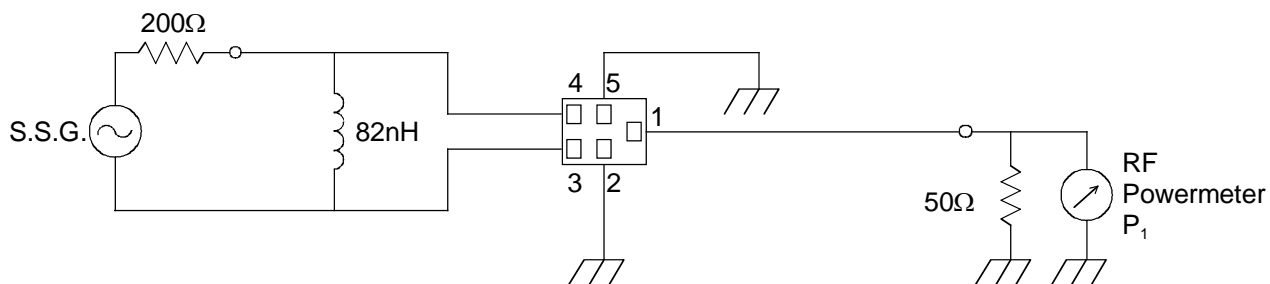
Recommended Land Pattern

Top View



Test Circuit

Bottom View



SAW FILTER FOR UMTS BC2 Tx

Murata part number : SAFEA1G88FL0F00

■ RoHS Compliance

This component is compliant with RoHS directive.

This component was always RoHS compliant from the first date of manufacture.

• Caution - Limitation of Applications

This product is intended for the following applications only; however, please do not use this product in these applications where defects might directly cause damage to a third party's life, body or property.

- a. Mobile Telephone
- b. Cordless phone (except for Automotive use)
- c. PC (Including Notebook PC, Netbook PC, Tablet)
- d. Game
- e. Camera (except for Business/security use)
- f. Set Top Box
- g. Electronic dictionary
- h. Digital audio equipment

• This catalog is for reference only and not an official product specification document, therefore, please review and approve our official product specification before ordering this product.