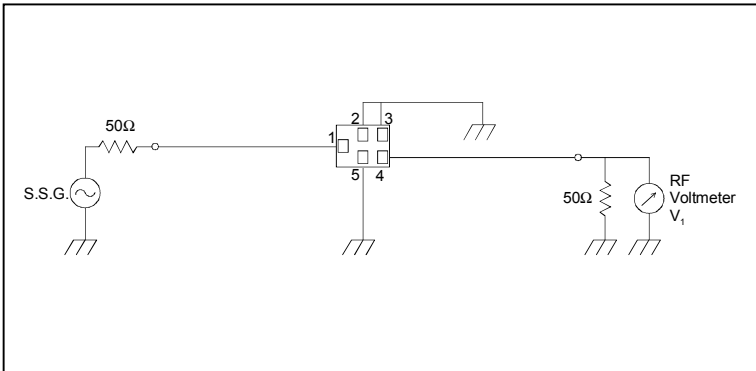


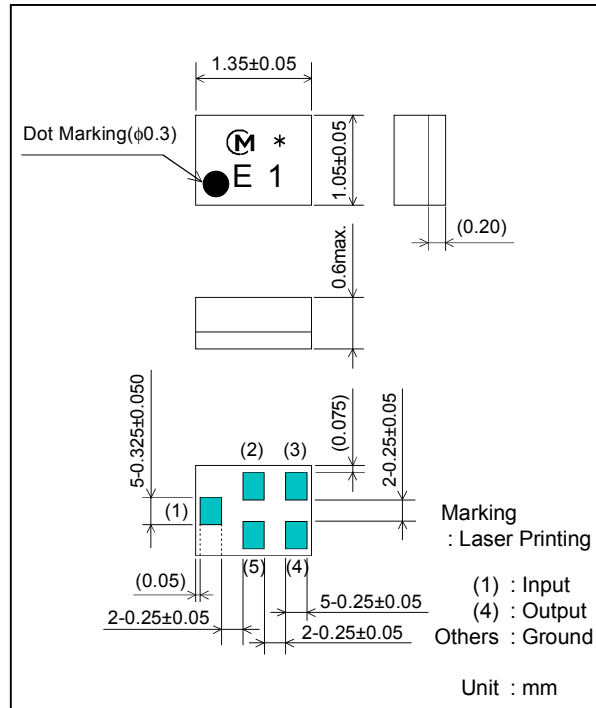
Feature

1. Low Insertion Loss (2.5 dB max.)
2. Ultra Small SMD package (1.35x1.05mm package)

Test Circuit



Package Dimensions



Specification

Item	Specification	
	-30 to +85°C	typ.
Nominal Center Frequency(f_c)	836.5 MHz	
Insertion Loss (824 to 849 MHz)	2.5 dB max.	2.1 dB
Absolute Attenuation		
1) 0.1 to 800 MHz	35 dB min.	61 dB
2) 869 to 894 MHz	40 dB min.	42 dB
3) 1574 to 1577 MHz	35 dB min.	61 dB
4) 1638 to 1708 MHz	45 dB min.	59 dB
5) 2462 to 2557 MHz	30 dB min.	52 dB
6) 3286 to 3406 MHz	20 dB min.	50 dB
Ripple Deviation (824 to 849 MHz)	1.8 dB max.	0.6 dB
VSWR (824 to 849 MHz)	1.9 max.	1.5
Input/Output Impedance (nominal)	50Ω	

Frequency Characteristics

